

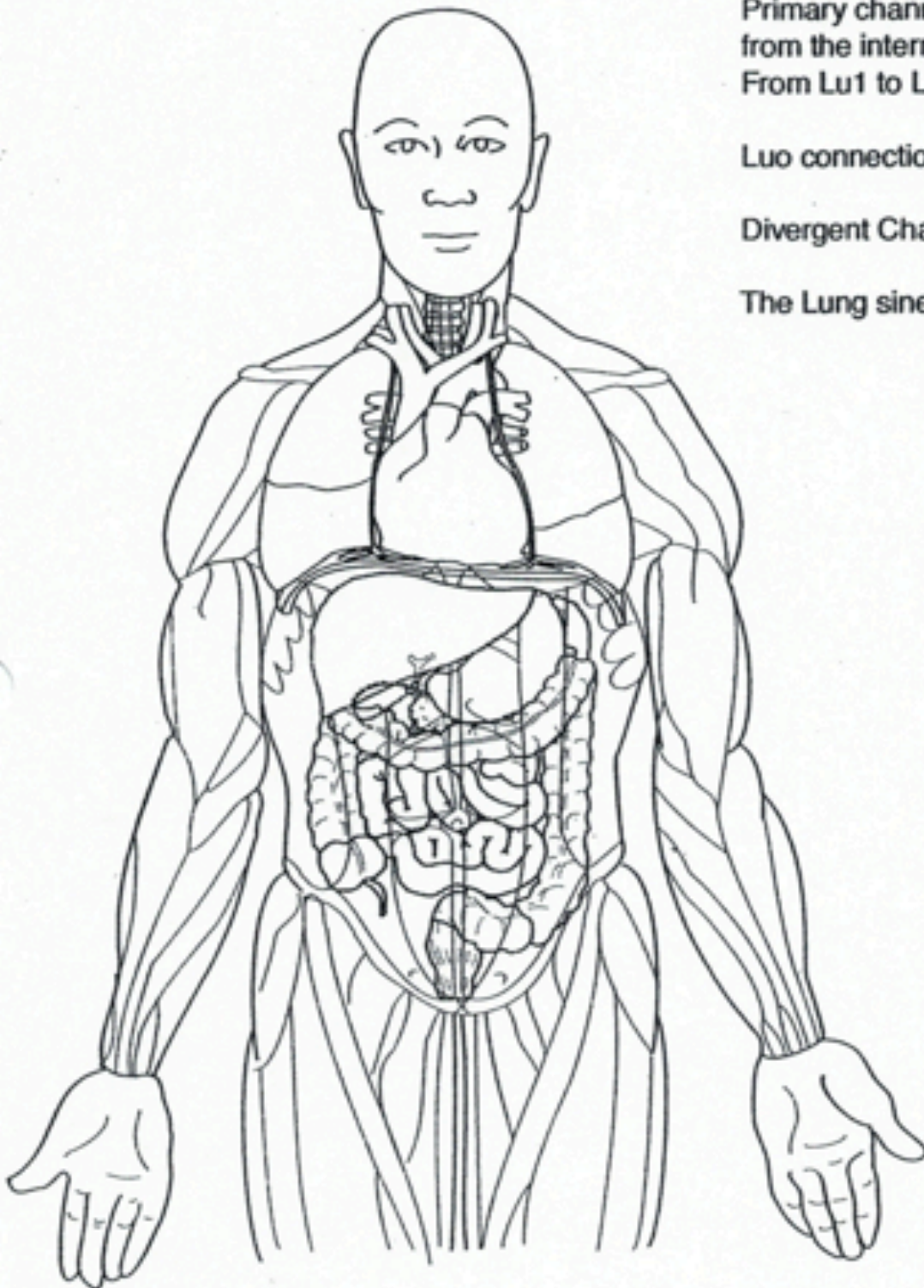
Lung Channel of Hand TAIYIN

Primary channel
from the internal organs out to Lu1
From Lu1 to Lu11

Luo connection hannel

Divergent Channel

The Lung sinew (muscular) channel



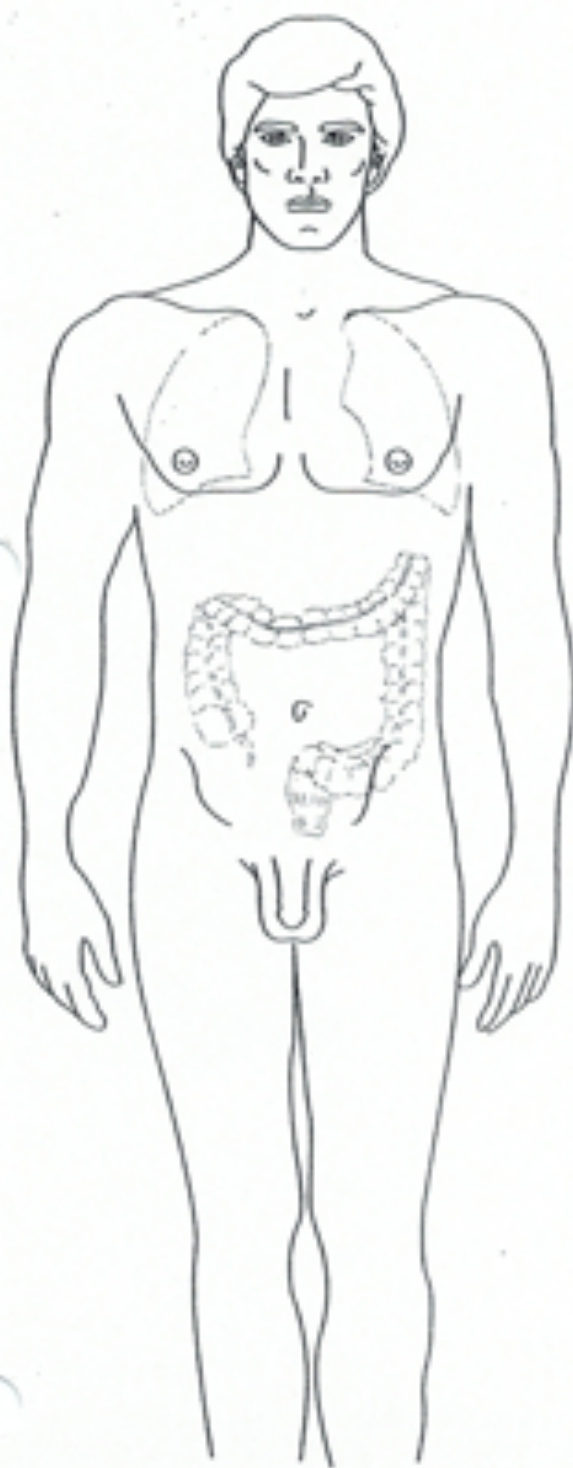
Large Intestine Channel of Hand YANGMING

LI primary channel from LI1 to LI16
Through the back of the neck to GV14
Through the front of the neck to LI20

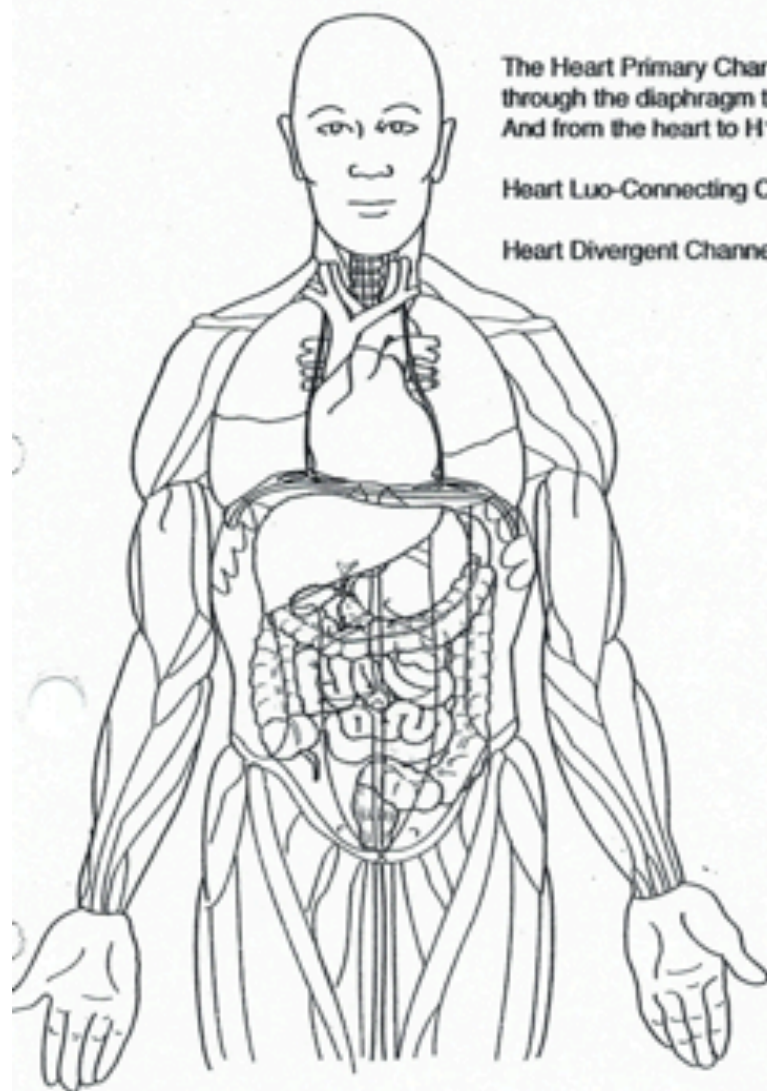
LI Luo Connecting channel

LI Divergent channel

LI sinew channel



Heart Channel of Hand SHAOYIN

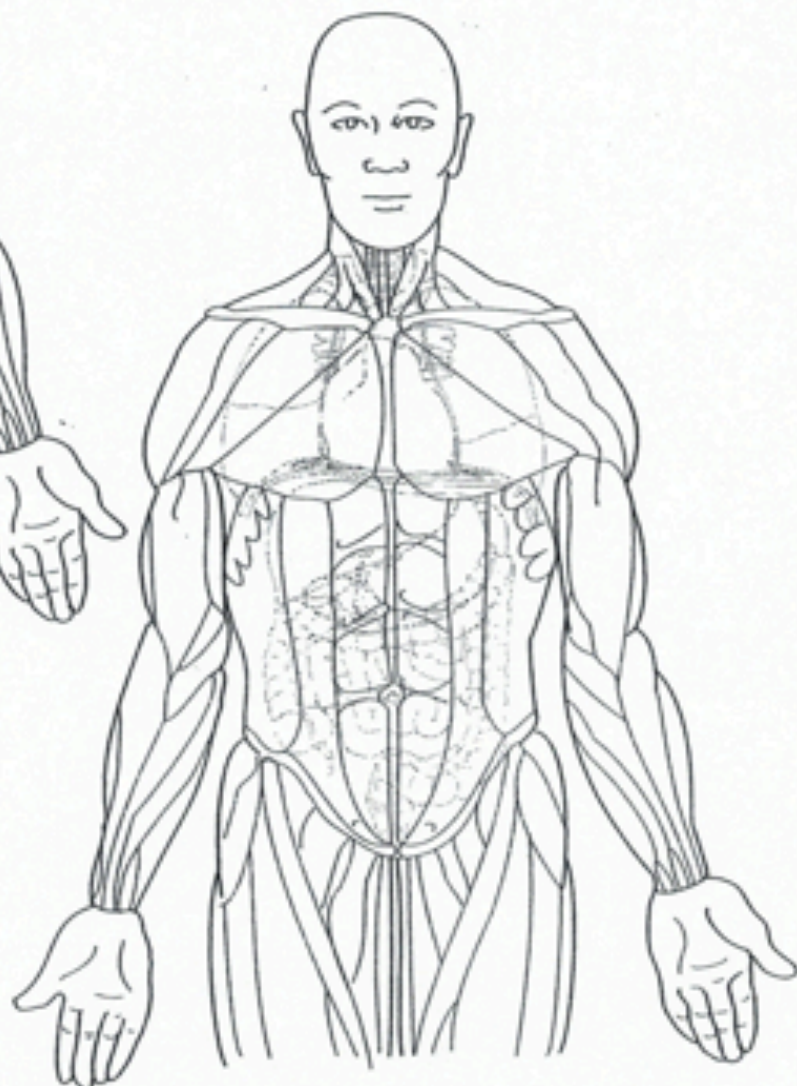


The Heart Primary Channel originating from the heart
through the diaphragm to the small intestines and the eye
And from the heart to H1 from there to H9

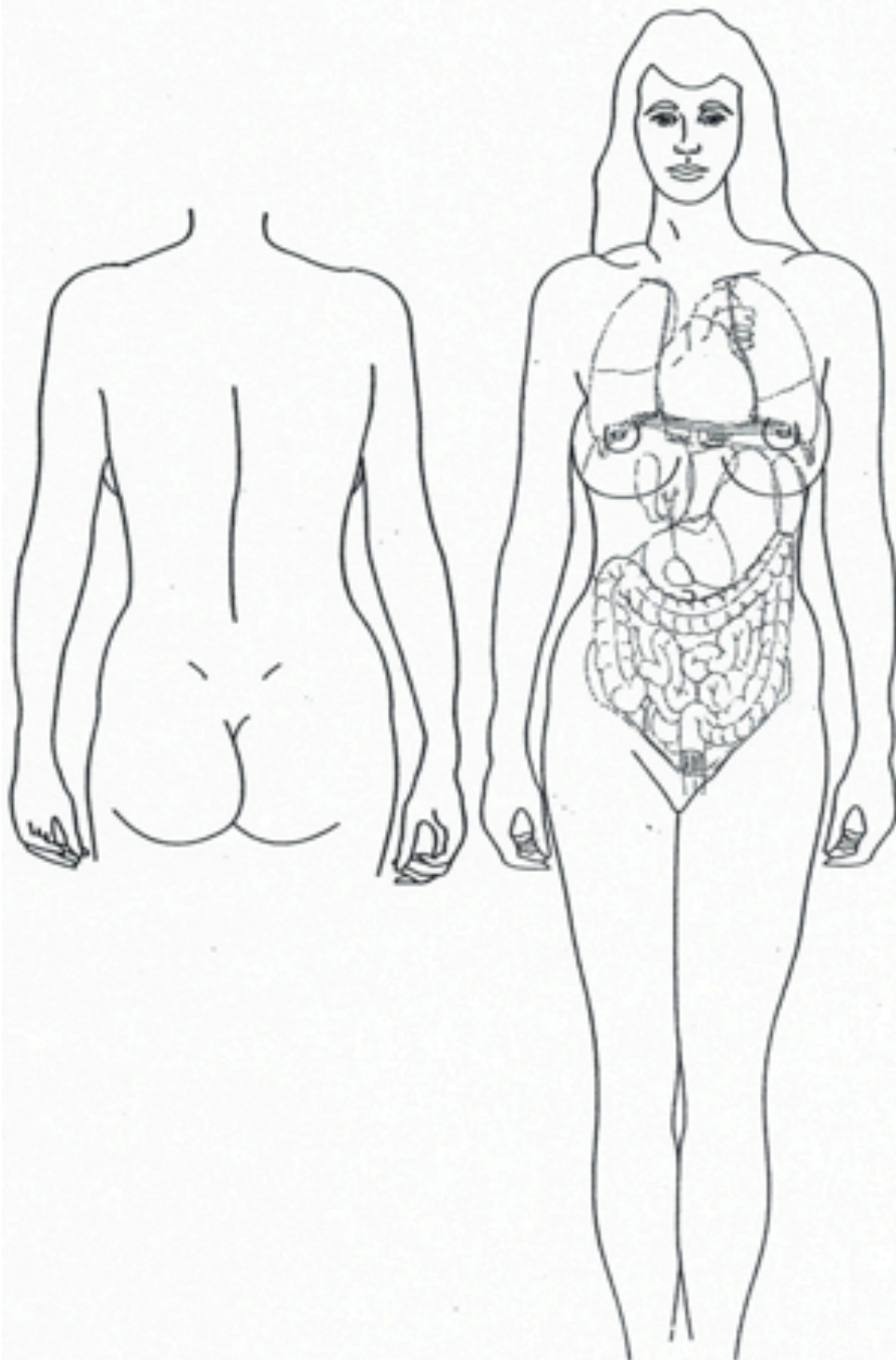
Heart Luo-Connecting Channel

Heart Divergent Channel

The Heart Sinew Channel



Small Intestine Channel of Hand TAIYANG



SI Primary channel begins on the ulnar side of the little finger and ascends along the ulnar side of the arm.

Meets the LI channel @ LI14

Rises to the lateral aspect of the face GB1, TW20, GB11, BI1

Descends through the heart

Stomach and Small intestine

Intersects with CV17, CV13,

CV12 and descends to SI39

SI Luo connecting channel

SI Divergent channel

SI sinew channel

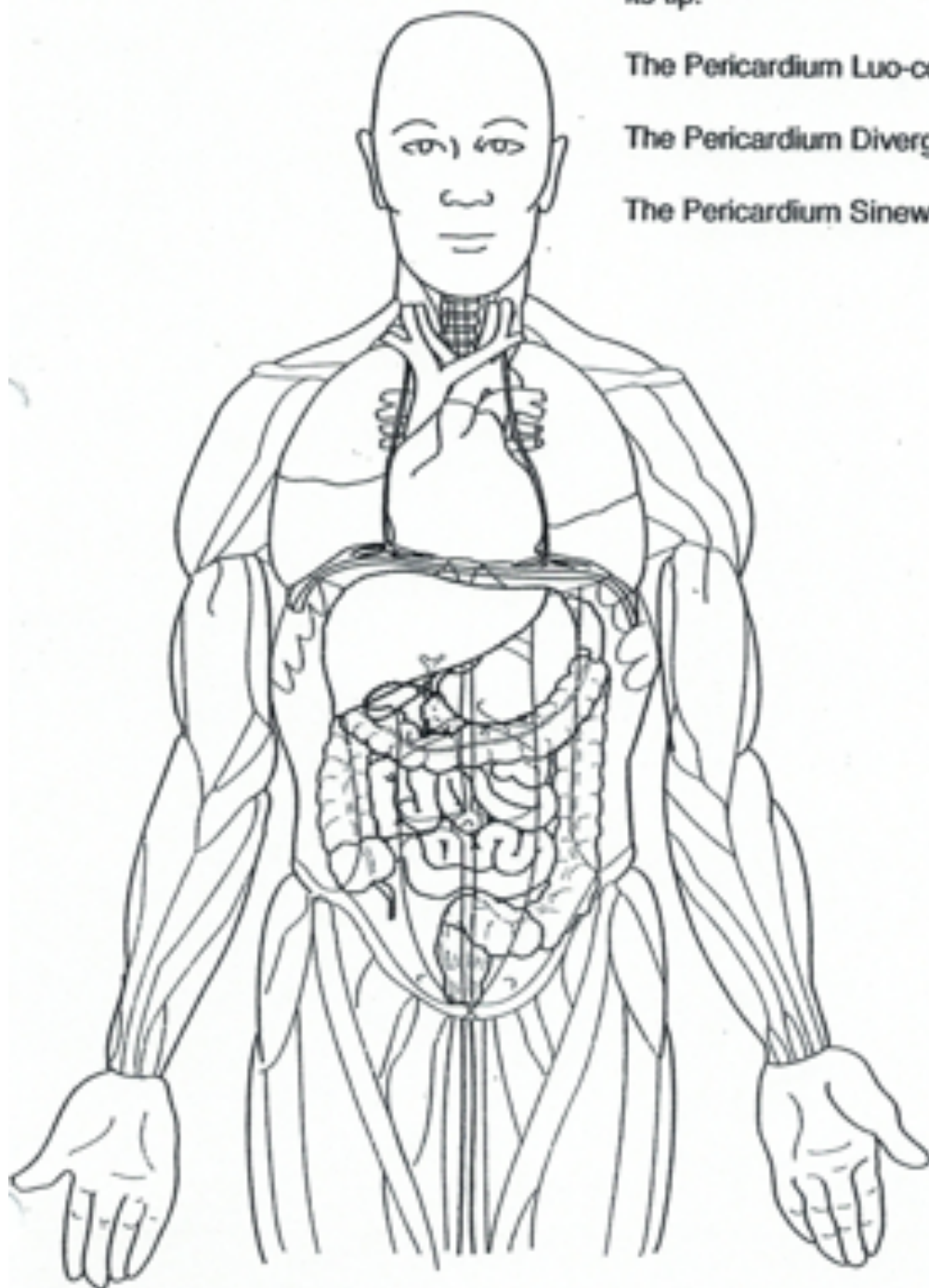
Pericardium Channel of Hand JUEYIN

The Pericardium Channel originates in the center of the chest and connects with the Pericardium. Descends through the diaphragm passing through the upper, middle and lower burners. A branch follows the radial side of the ring finger to its tip.

The Pericardium Luo-connecting Channel

The Pericardium Divergent Channel

The Pericardium Sinew Channel



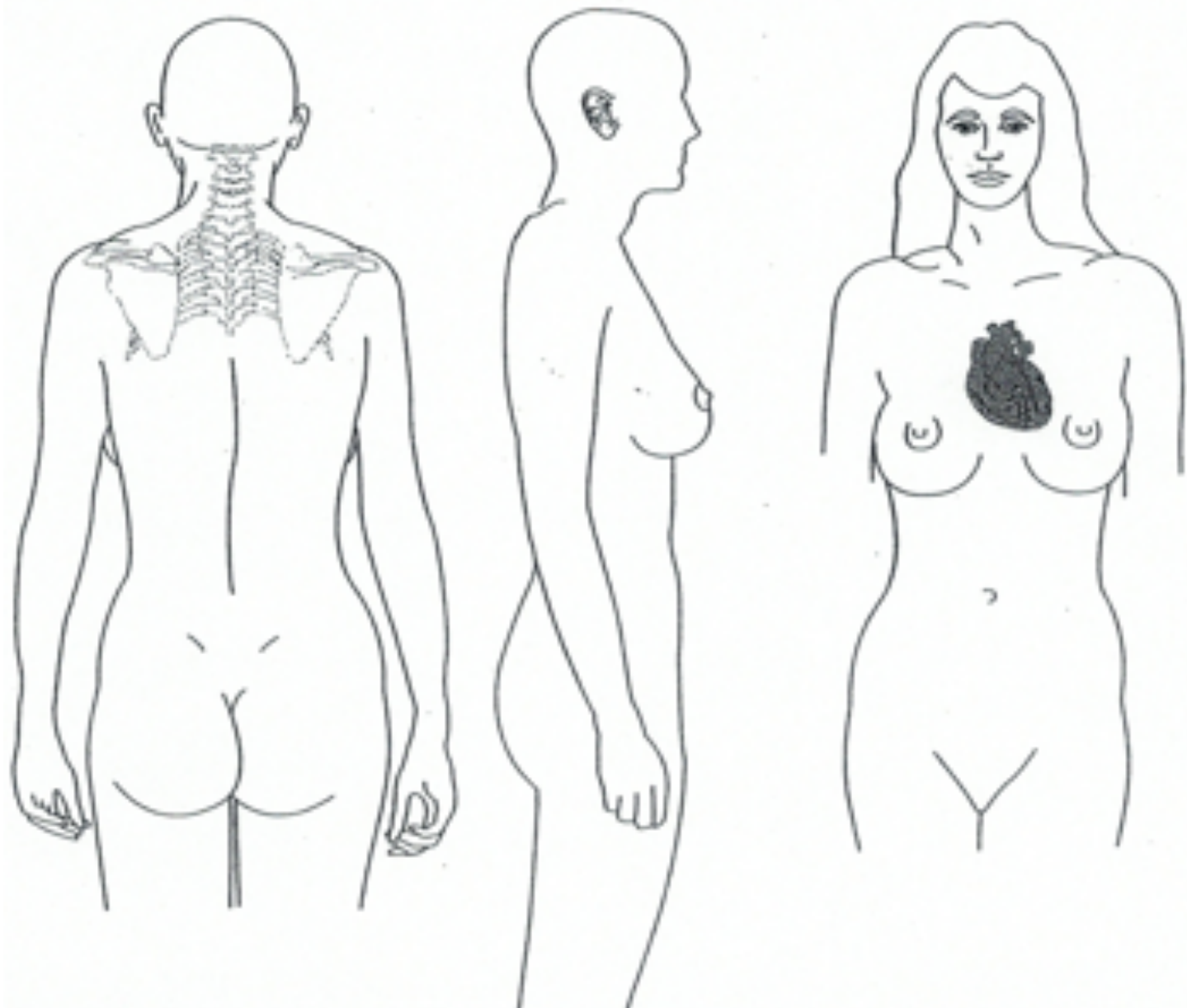
Sanjiao Channel of Hand SHAOYANG

Describe the Primary Channel of the Tripple Warmer

Describe the Luo Connecting Channel of the Tripple Warmer

Describe the Divergent Channel of the Tripple Warmer

Describe the Sinew Channel of the Tripple Warmer



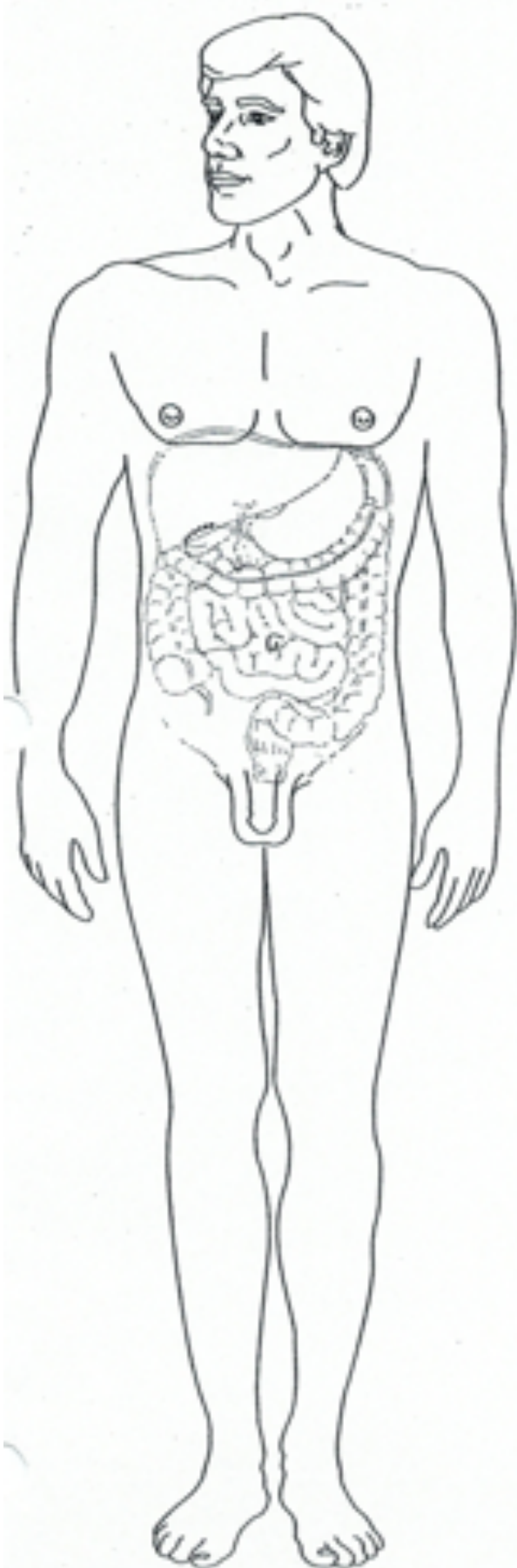
Stomach Channel of Foot YANGMING

St Primary channel beginning at LI20 through BL1 and St1 to St8 Follow the channel through the neck and chest into the internal organs to the foot ending at St45

St Luo connecting channel

St Divergent channel

Describe the muscles of Stomach sinew channel



Spleen Channel of Foot TAIYIN

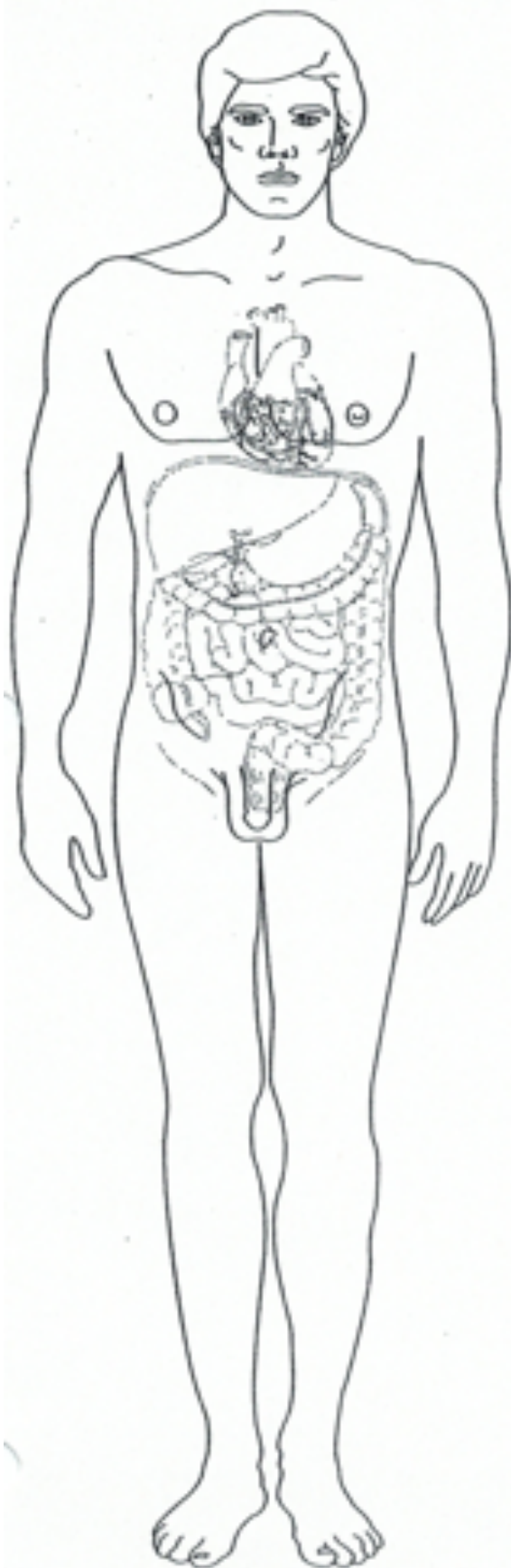
Spleen primary channel from Sp1 to the groin
Through the Hara and chest to Sp21

Spleen Luo-Connecting Channel

Spleen Divergent Channel

The Great Luo-Connecting Channel of the Spleen

The Spleen Sinew channel



Liver Channel of foot JUEYIN

Describe the Primary Channel of the Liver

Describe the Luo Connecting Channel of the Liver

Describe the Divergent Channel of the Liver

Describe the Sinew Channel of the Liver



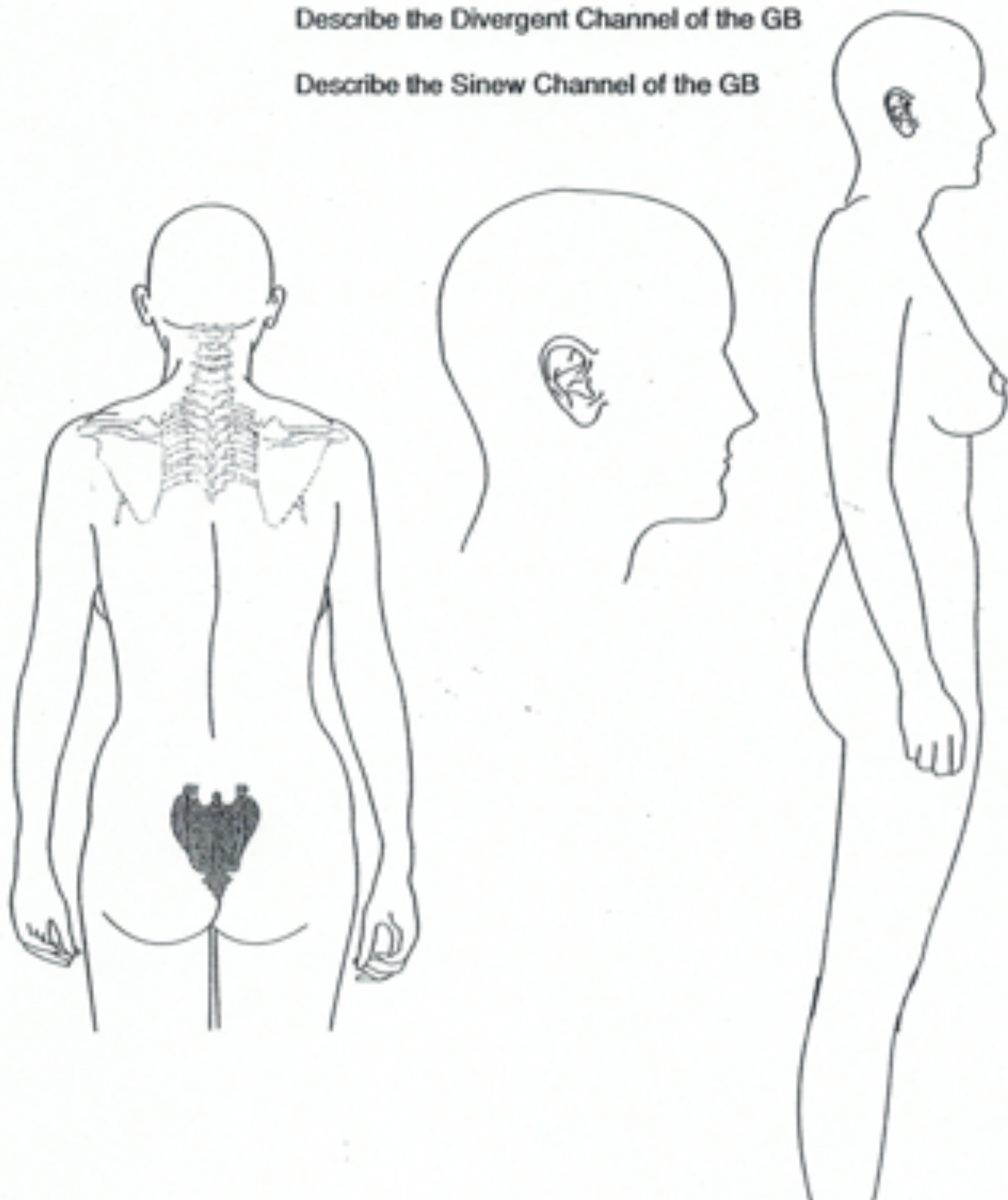
Gall Bladder Channel of Foot SHAOYANG

Describe the Primary Channel of the GB

Describe the Luo Connecting Channel of the GB

Describe the Divergent Channel of the GB

Describe the Sinew Channel of the GB



Bladder Channel of the Foot TAIYANG

Describe the Bladder Primary Channel

BL Luo-connecting Channel

BL Divergent Channel

BL Sinew Channel

